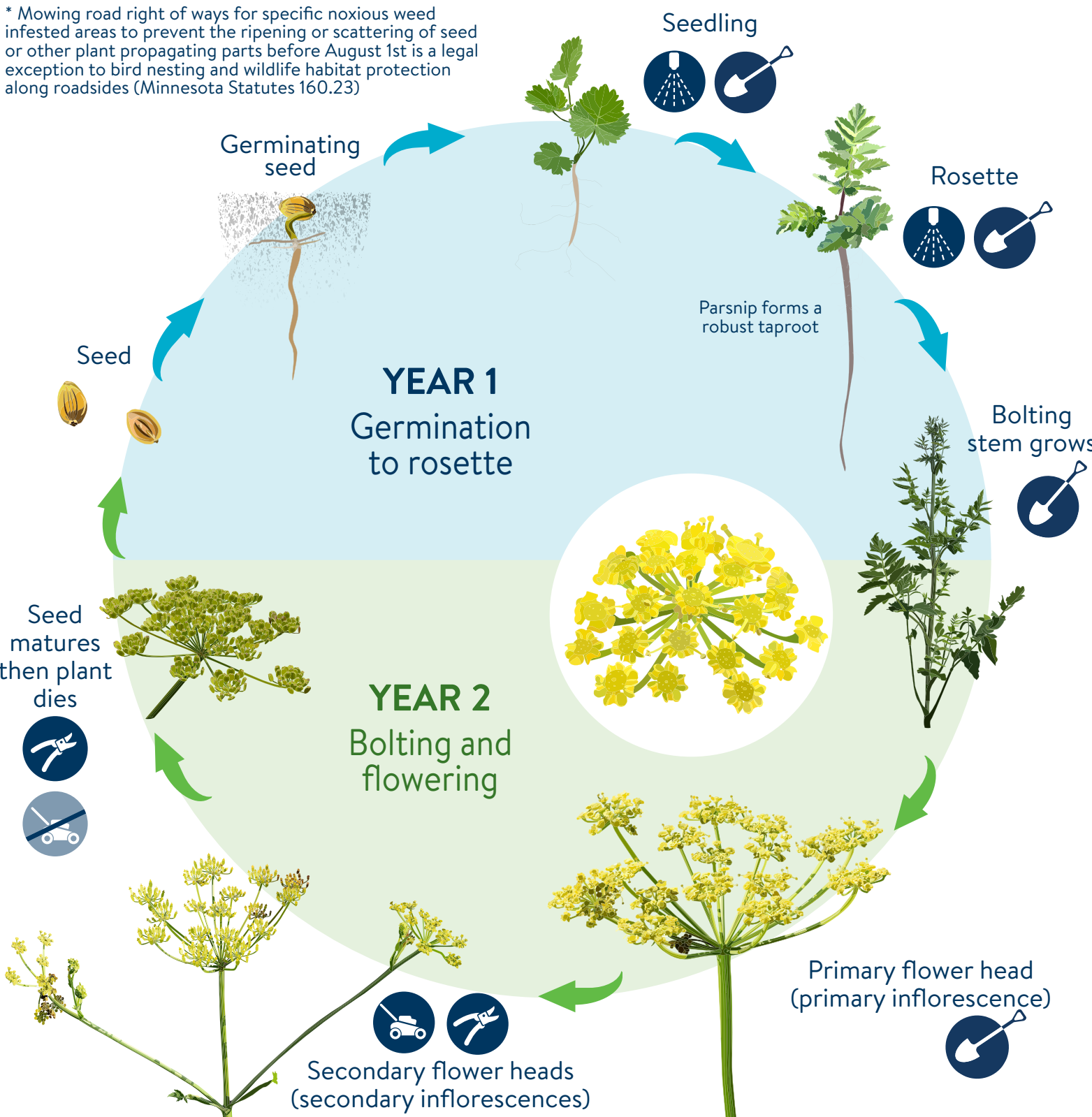


* Mowing road right of ways for specific noxious weed infested areas to prevent the ripening or scattering of seed or other plant propagating parts before August 1st is a legal exception to bird nesting and wildlife habitat protection along roadsides (Minnesota Statutes 160.23)








WILD PARSNIP

Pastinaca sativa

BIENNIAL LIFECYCLE & TREATMENT TIMING

mda.state.mn.us/weedcontrol

-  **FOLIAR SPRAY**
Spray rosettes.
-  **DIG ROOT**
Dig out root at least two inches below ground during seedling, rosette, bolting and primary flower head stage.
-  **MOW**
Mow* during the secondary flower head stage before seed develops.
-  **CUT SEEDHEADS**
Remove seedheads during secondary flower head stage and on mature plants.
-  **Wear protective clothing including gloves and eyewear when in contact with wild parsnip.**