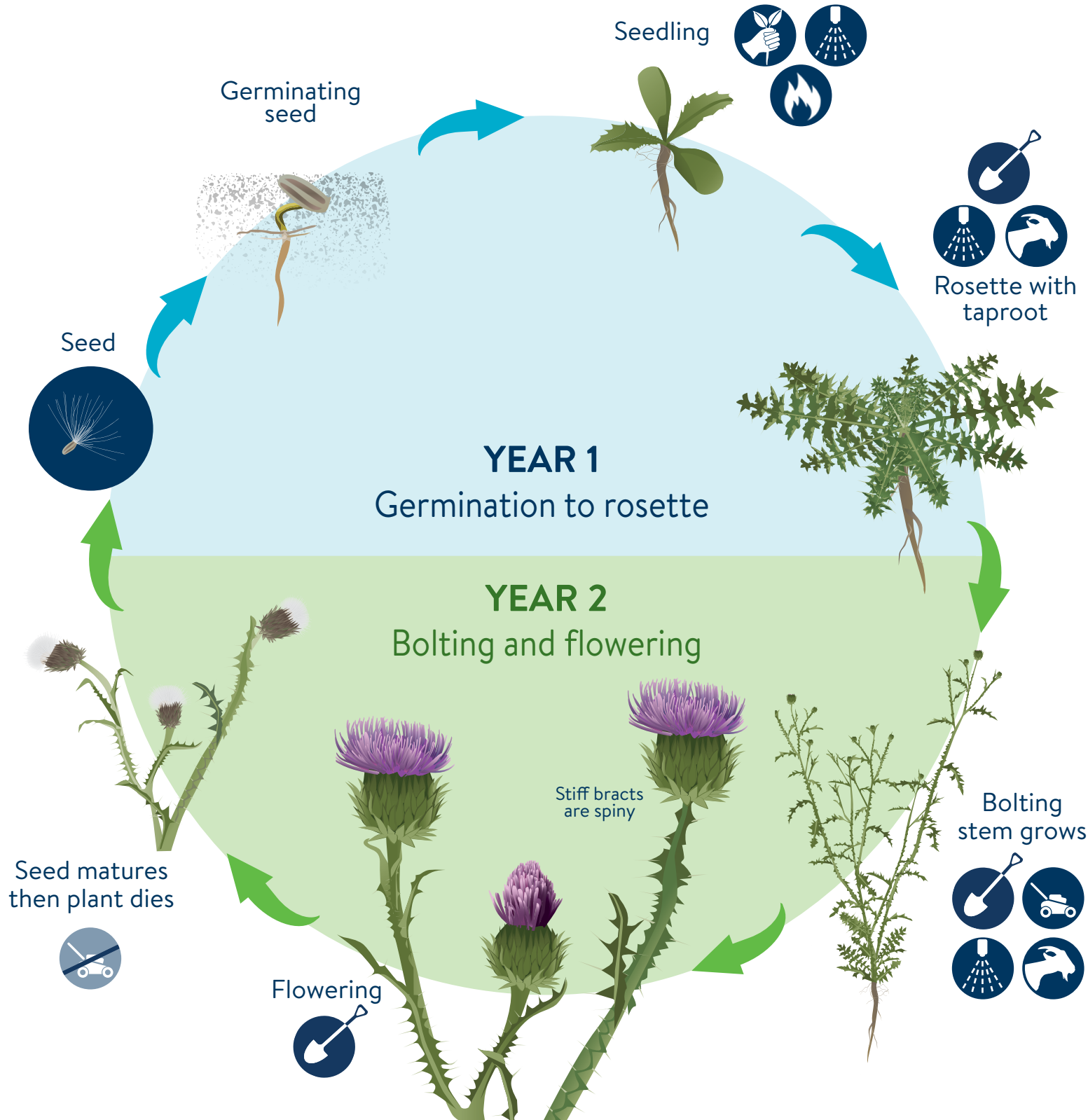


PLUMELESS THISTLE

Carduus acanthoides

BIENNIAL LIFECYCLE & TREATMENT TIMING

mda.state.mn.us/weedcontrol



-  **HAND PULL**
Remove seedling and root.
-  **DIG ROOT**
Dig out root of small infestations.
-  **MOW**
Mow at least once per year during bud stage.
-  **FOLIAR SPRAY**
Spray after leaf out until bud stage.
-  **GRAZING**
Goats or sheep eat in spring and at bud stage.
-  **PRESCRIBED FIRE**
Burn seedlings and integrate with other methods.
-  **Monitoring and repeated management is necessary for long term control of established infestations.**

