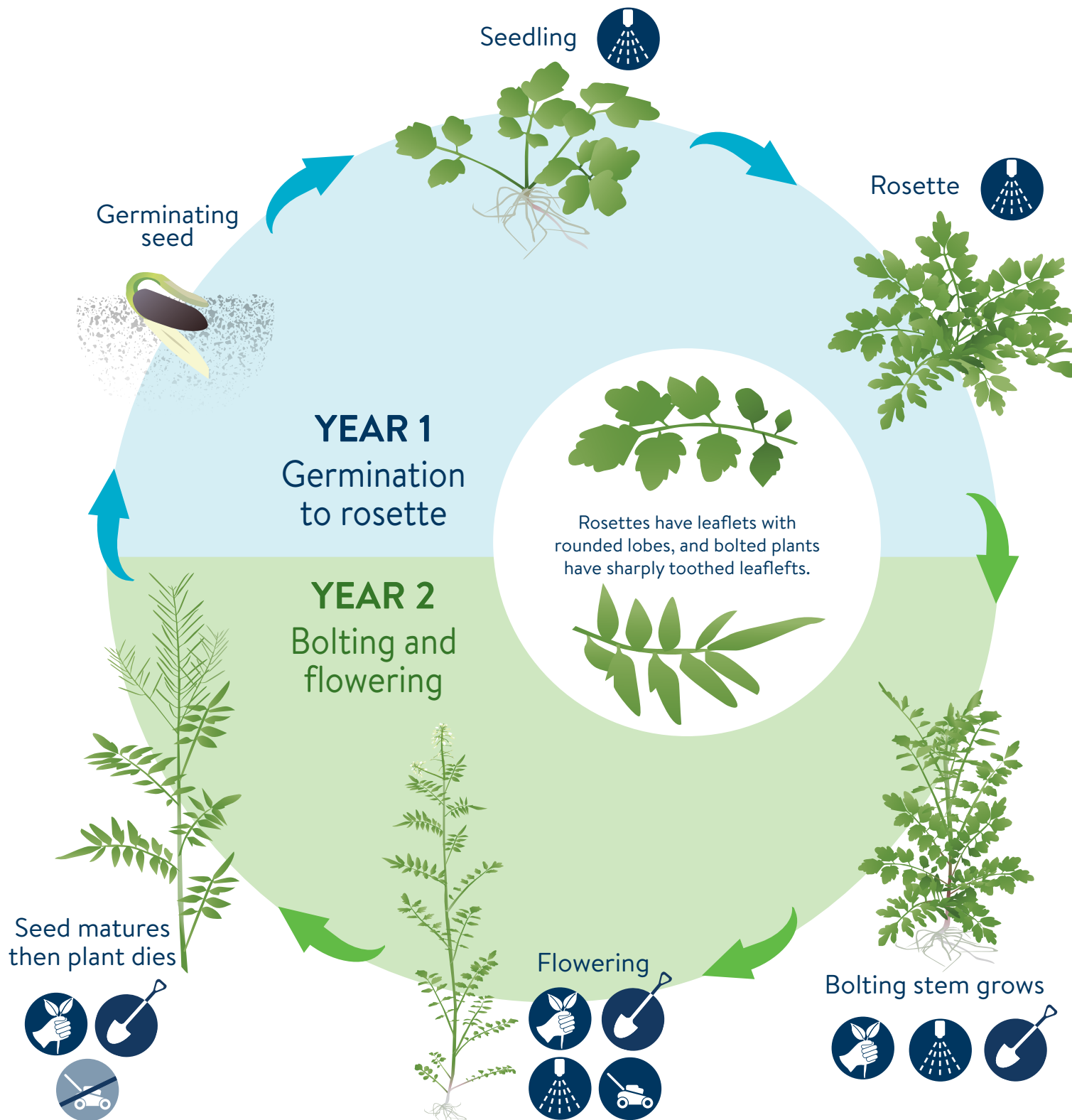


NARROWLEAF BITTERCRESS

Cardamine impatiens

BIENNIAL LIFECYCLE & TREATMENT TIMING

mda.state.mn.us/weedcontrol



HAND PULL

Pulling second year plants is easier than rosettes.



DIG ROOT

Remove at least two inches below ground.



FOLIAR SPRAY

Spray after leaf out until bud stage.



MOW

Mow at least once per year while flowering before seed development.



WEED TORCH

Burn at any stage.



Monitoring and repeated management is necessary for long term control of established infestations.



UNIVERSITY OF MINNESOTA EXTENSION
Driven to Discover™