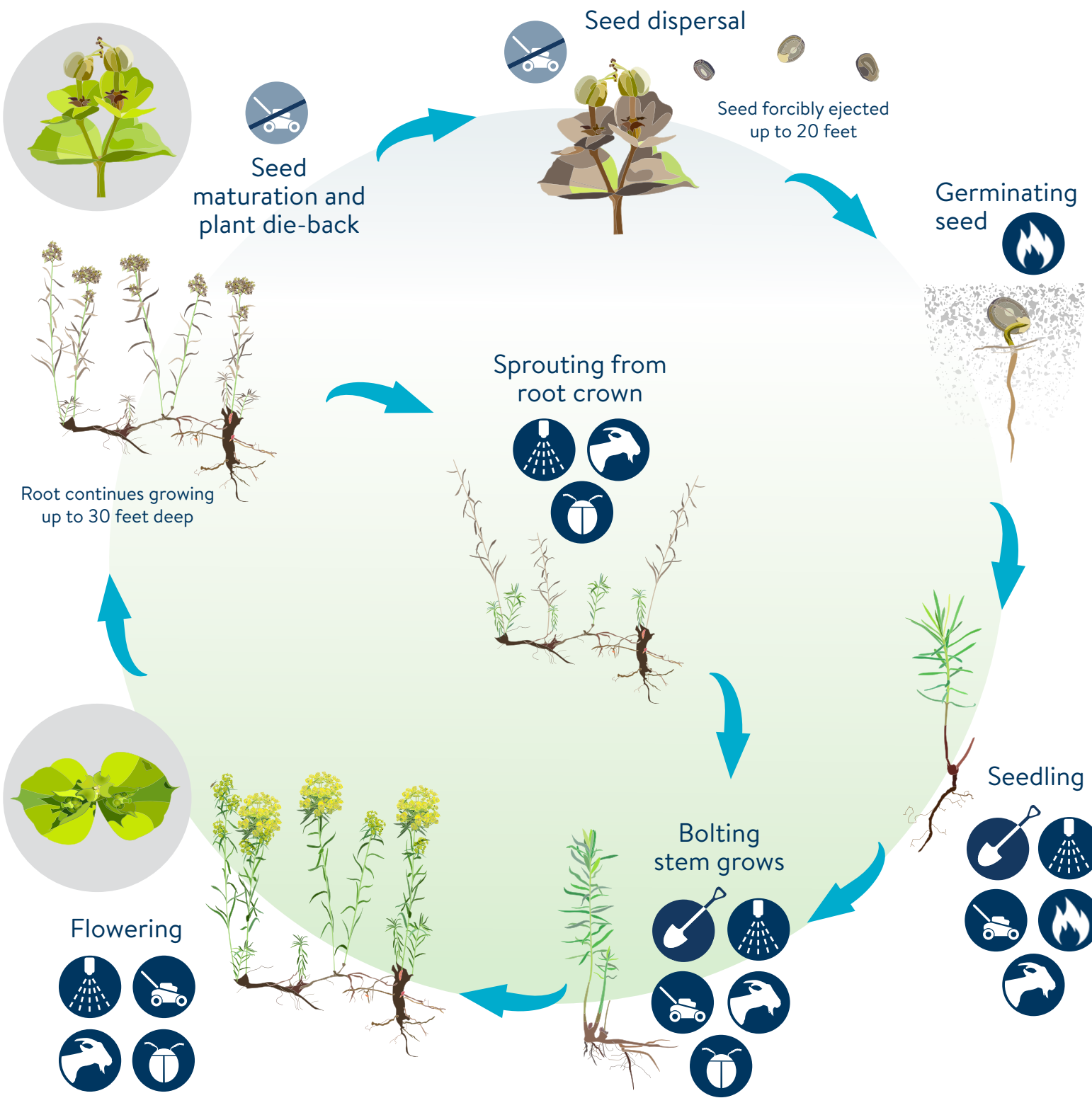


# LEAFY SPURGE

*Euphorbia esula*

## PERENNIAL LIFECYCLE & TREATMENT TIMING

[mda.state.mn.us/weedcontrol](http://mda.state.mn.us/weedcontrol)



- DIG ROOT**  
Remove seedling and root.
- FOLIAR SPRAY**  
Spray leaves.
- MOW**  
Mow before seed set to prevent seed dispersal.
- PRESCRIBED FIRE**  
Can be integrated with other control methods.
- GRAZING**  
Goats or sheep graze foliage before seed development.
- BIOCONTROL**  
Release biocontrol agents on large populations.
- Monitoring and repeated management is necessary for long term control of established infestations.**